



**Cross Country Wireless, 7 Thirlmere Grove, BOLTON, BL4 0QB, UK**

Email [chrism@crosscountrywireless.net](mailto:chrism@crosscountrywireless.net)  
Web page <http://www.crosscountrywireless.net>  
Telephone +44 (0) 1204 410626  
Mobile +44 (0) 7752 391908  
Yahoo group: [http://uk.groups.yahoo.com/group/cross\\_country\\_wireless/](http://uk.groups.yahoo.com/group/cross_country_wireless/)

## **APRS TNC Digi Tracker set-up FAQs**

**Read this before starting the APRS TNC Digi Tracker set-up!**

### **Where are the set up files?**

On the CD disc included with the APRS TNC Digi Tracker is a folder "CCW APRS TNC Digi Tracker". If you can't use the CD contact Cross Country Wireless for a link to the Dropbox folder on the internet containing these files.

### **Where is the Operating Manual?**

On the CD disc inside the "CCW APRS TNC Digi Tracker" folder is the CCW APRS TNC Digi Tracker USB version Operating Manual.

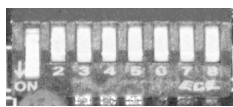
### **How do I install the USB drivers?**

There is also a folder "USB driver" in the "CCW APRS TNC Digi Tracker" folder. Inside that folder is a exe program to install the FTDI virtual com port drivers.

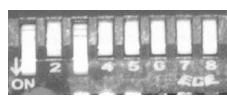
### **How do I program my Digi Tracker?**

On the CD disc inside the "CCW APRS TNC Digi Tracker" folder is the folder CCW APRS Messenger Lite. Inside the folder is a set-up file for the program. This program can be used to change callsigns and beacon text. It's also possible to use a terminal program like HyperTerminal or TeraTerm. More details are included in the Operating Manual.

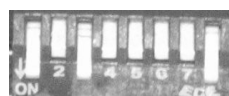
### **What are the switch settings?**



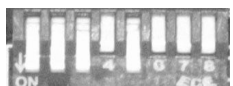
Programming



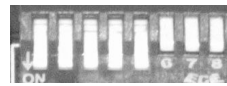
TNC operation



TNC with digipeater



Tracking mode



Tracking handheld



Tracking with digipeater

### **Where can I get help or advice from other APRS TNC Digi Tracker users?**

Join the Cross Country Wireless Yahoo group:  
[http://uk.groups.yahoo.com/group/cross\\_country\\_wireless/](http://uk.groups.yahoo.com/group/cross_country_wireless/)

**Partners: Mr C.J.Moulding, Mrs S.M.Moulding**